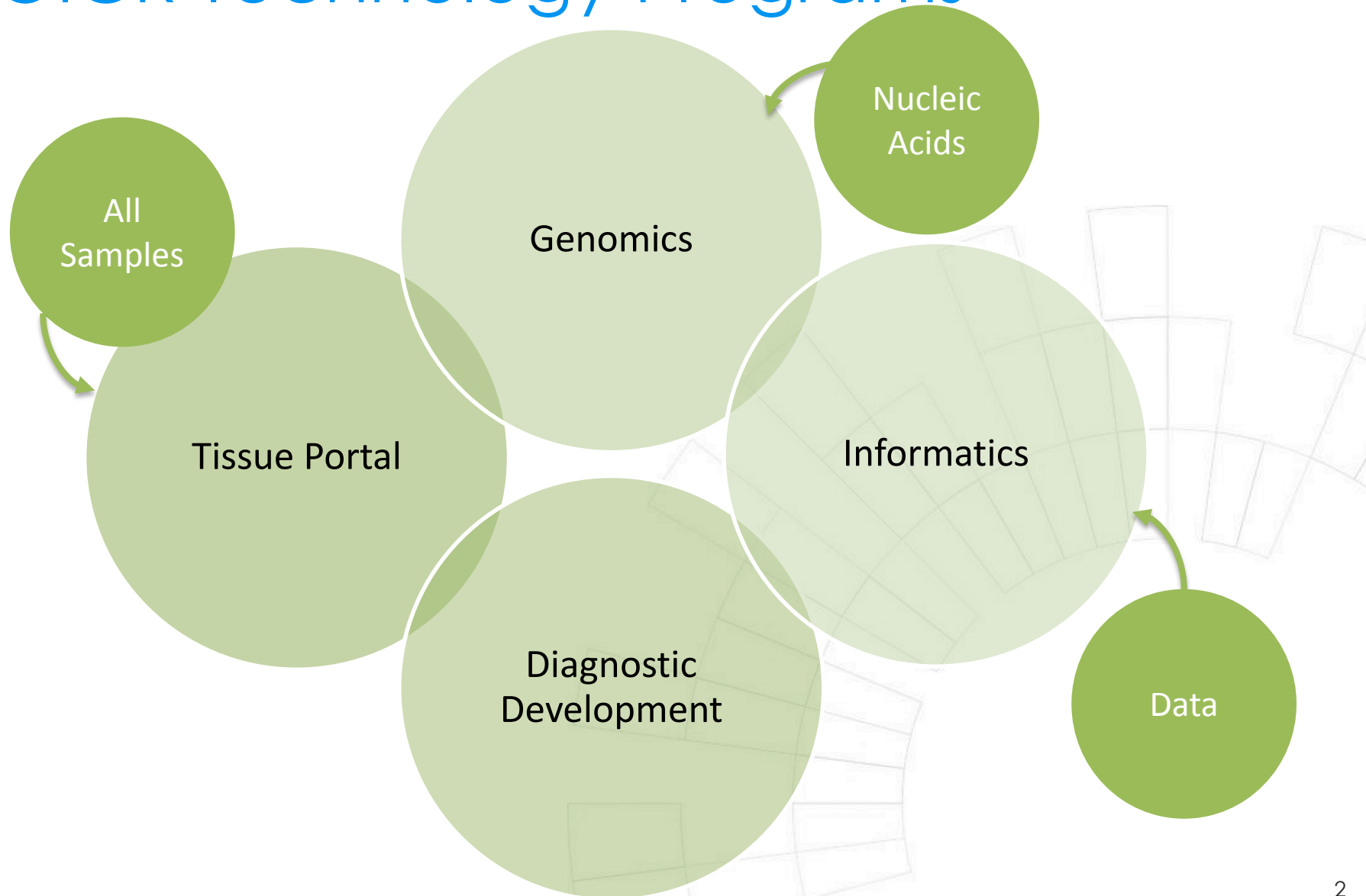




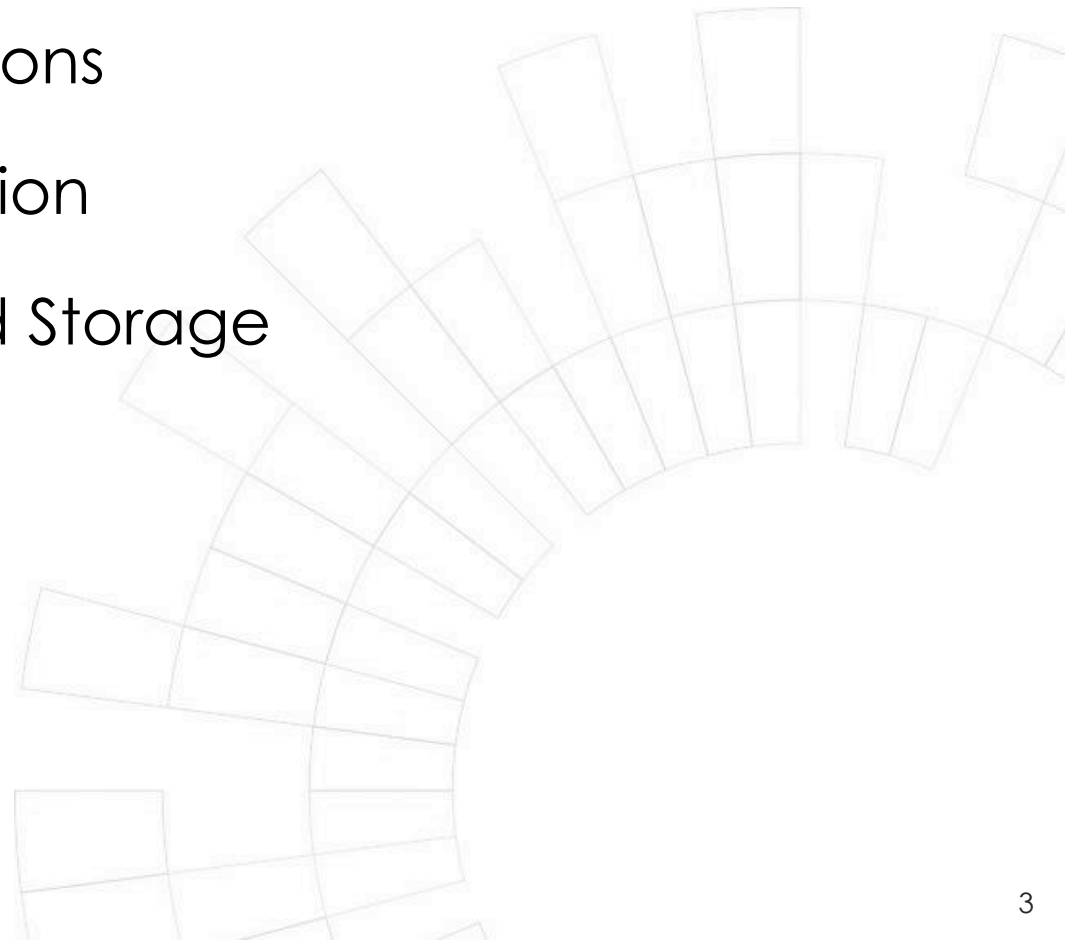
# OICR Technology Platforms

# OICR Technology Programs



# Tissue Portal

- ▶ Correlative Sciences Support
- ▶ Nucleic Acid Extractions
- ▶ Macro/Micro-dissection
- ▶ Sample Tracking and Storage
- ▶ Histology



# PRECISE

- ▶ **PR**ostate **E**valuation for **C**linically **I**mportant disease:  
MRI vs **S**tandard **E**valuation procedures
- ▶ **Hypothesis:** The proportion of men with clinically significant cancer detected by MRI-targeted biopsy will be no less than that detected by systematic TRUS guided biopsy.

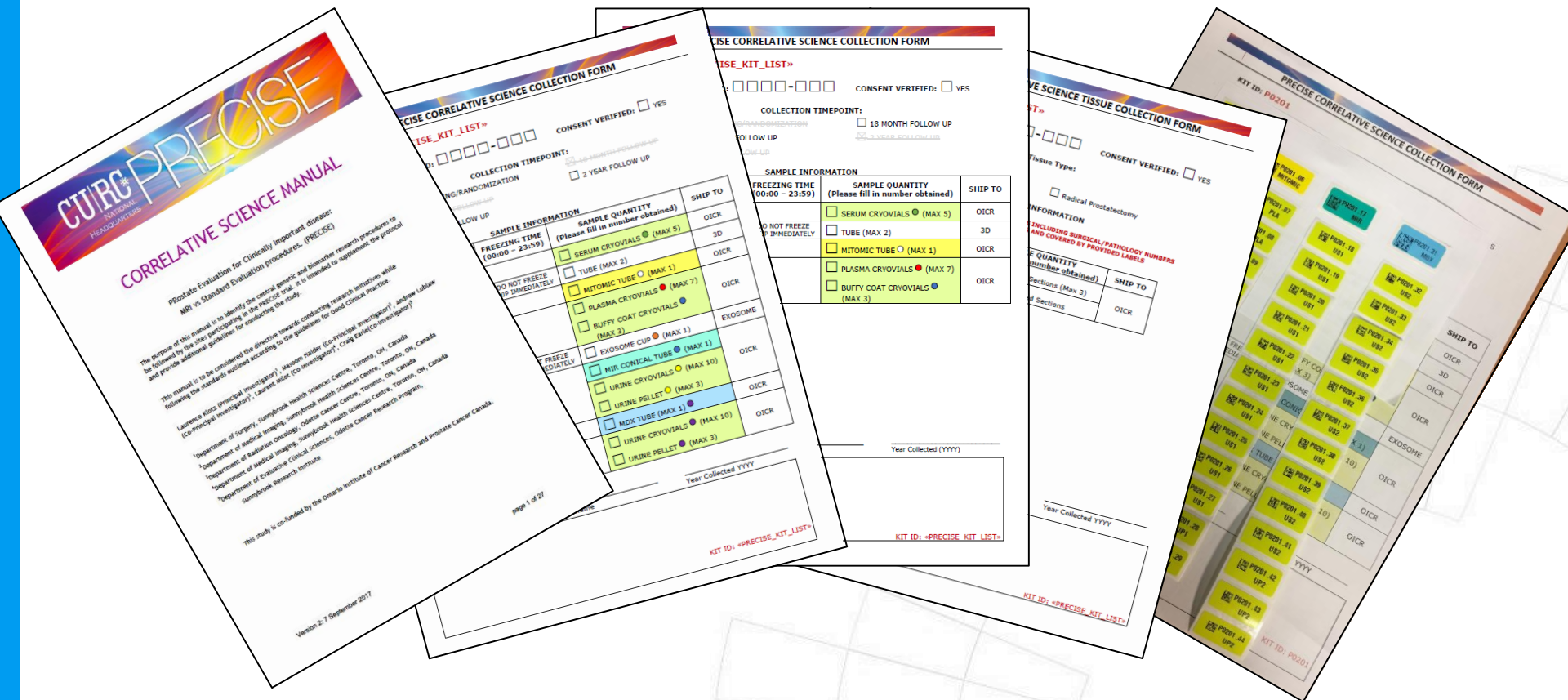


# PRECISE

- ▶ 450 patients
- ▶ 5+ collection time points
- ▶ Up to 46 samples per visit plus tissue slides
- ▶ Long term banking at OICR
- ▶ 6 confirmed studies using samples
- ▶ Total of over 100,000 samples



# PRECISE



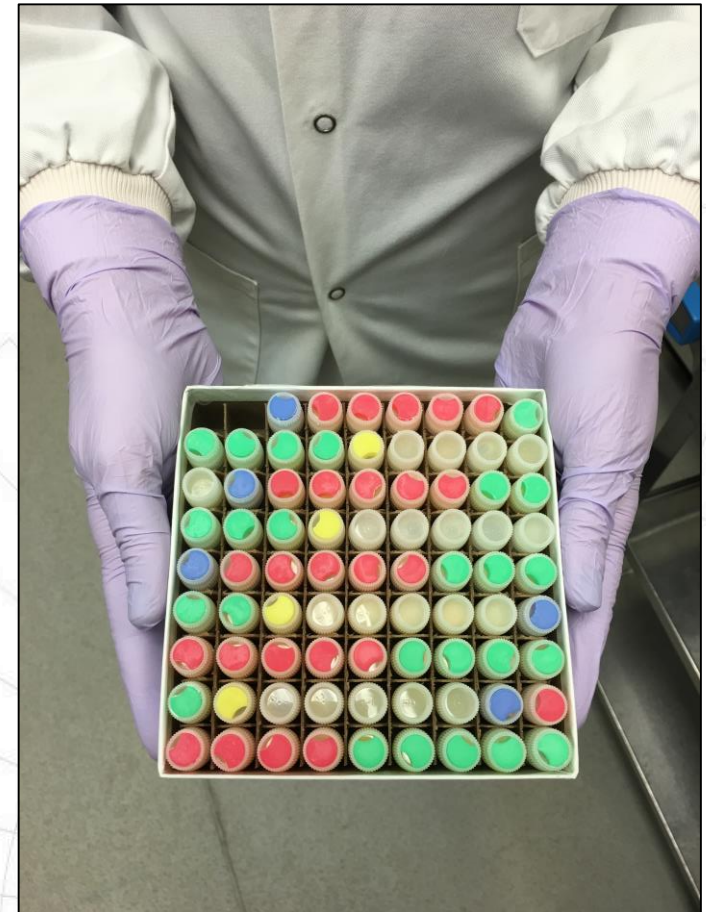
Lab Manual

Forms

Barcoded Kit Labels

# PRECISE

- ▶ Receive
- ▶ Store & Transfer
- ▶ Process
- ▶ Provide feedback





Funding for the Ontario Institute for Cancer Research  
is provided by the Government of Ontario

